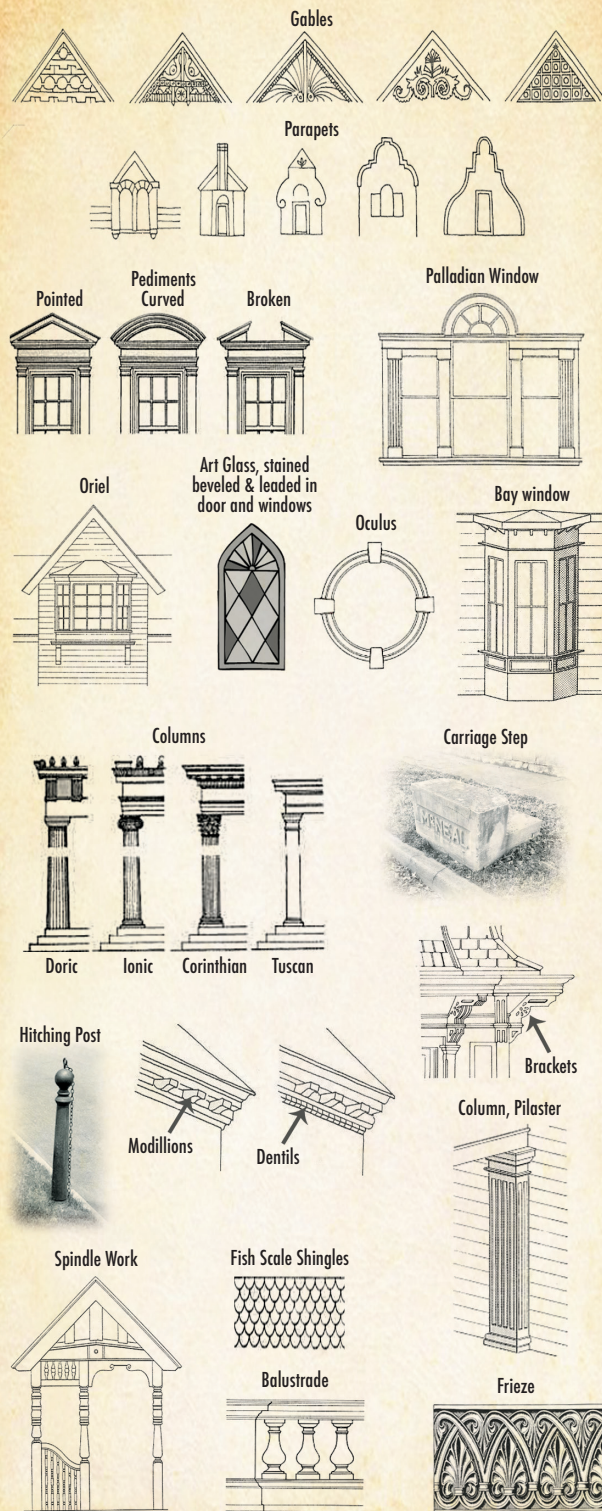


ARCHITECTURAL FEATURES



MURPHYSBURG

Historic District

Joplin • Missouri

Boundaries are Sergeant, Moffet & Byers Avenues
First to Seventh Streets

Bordered on the South by The Mother Road
Historic Route 66

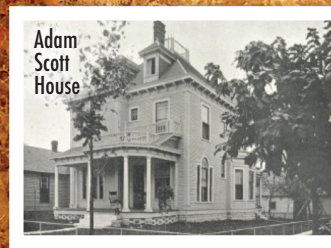


Frye/BoSom House

NATIONAL REGISTER OF HISTORIC PLACES



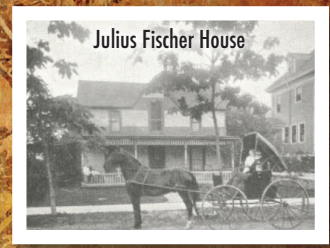
Murphysburg.org • 417-208-9376
Murphysburg@gmail.com



Adam
Scott
House



William
Houk
House



Julius Fischer House

Select Historic Homes and Properties

JACKSON AVENUE

419 South Jackson	John Johnson House, aka Schifferdecker Caretaker's House (Carriage step, Pilasters, Bay windows, Parapet)	ca. 1890 ~ Tudor Revival
-------------------	--	--------------------------

SERGEANT AVENUE

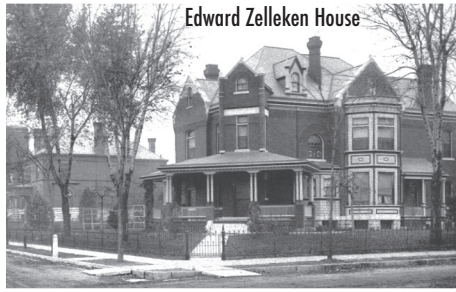
101 South Sergeant	Jere Charlow House (Bay windows)	ca. 1908 ~ American Foursquare
107 South Sergeant	Abraham Onstott House (Palladian window)	ca. 1905 ~ Colonial Revival
108 South Sergeant	J.E. Garm House (Bay windows, Pilasters, Carved wood pediment)	ca. 1908 ~ American Foursquare: Classical elements
111 South Sergeant	William H. Miller House (Fish scale shingles)	ca. 1899 ~ Queen Anne
112 South Sergeant	Austin Allen House (Art Glass)	ca. 1906 ~ Arts and Crafts
202 South Sergeant*	Adam Scott House (Brackets, Art glass)	ca. 1899 ~ Queen Ann
210 South Sergeant	Oliver S. Picher House (Modillions, Hitching post)	ca. 1904 ~ Colonial Revival
218 South Sergeant*	William Houk House (Oculus window, Art glass, Hitching posts)	ca. 1903 ~ American Foursquare: Classical elements
219 South Sergeant	Thomas Lennan House (Door with curved pediment)	ca. 1917 ~ Georgian Revival
301 South Sergeant	James Geddes House (Spindle work, Art glass, Hitching post)	Late 1890s ~ Queen Anne
302 South Sergeant	Frank Childress House (Art glass)	ca. 1922 ~ Prairie
315 South Sergeant*	Julius Fischer House (Brackets)	ca. 1880s ~ I-Frame Farmhouse
318 South Sergeant*	Charles Frye/Fred BaSom House (Spindle work, Art glass)	ca. 1891 ~ Second Empire
406 South Sergeant*	Edward Zelleken House (Parapets, Art glass)	ca. 1893 ~ Queen Anne
421 South Sergeant*	William Picher House (Balustrade, Art glass, Hitching posts)	ca. 1899 ~ Colonial Revival
422 South Sergeant*	Charles Schifferdecker House (Hops vines frieze, Art glass, Hitching posts)	ca. 1890 ~ Romanesque
501 South Sergeant	Fletcher Taylor Snapp House (Art glass)	ca. 1905 ~ Colonial Revival
507 South Sergeant	Albert Winchester House (Balustrade)	ca. 1905 ~ Free Classic Queen Anne

*Vintage photograph shown

For a virtual walking tour and additional historical data, visit Murphysburg.org and click on "Walking Tour"



Information in this guide is provided by Historic Murphysburg Preservation, Inc. and is accurate to the best of our knowledge. HMP welcomes additional documentation, oral history and photographs. NOV2019

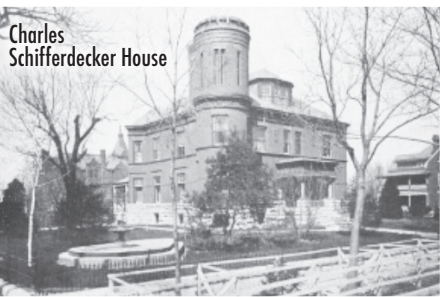


Edward Zelleken House

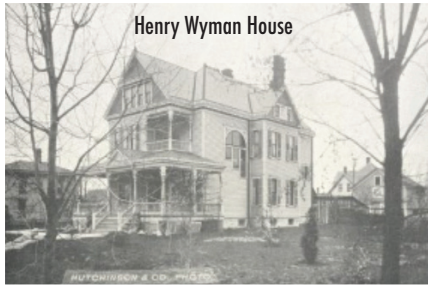
William Picher House



Charles Schifferdecker House



Henry Wyman House



SERGEANT AVENUE

508 South Sergeant*	Henry Weymann House (<i>Art glass</i>)	ca. 1892 ~ Queen Anne
518 South Sergeant	Charles G. Henderson House (<i>Dentils</i>)	ca. 1917 ~ Colonial Revival
523 South Sergeant	Gustave A. Kleinkauf House (<i>Square columns</i>)	ca. 1905 ~ Modern Craftsman Style Bungalow
528 South Sergeant	Julius Miller House (<i>Oculus window</i>)	ca. 1895 ~ Queen Anne
531 South Sergeant	Katherine J. (Foley) Douthat House (<i>Art glass</i>)	ca. 1932 ~ Tudor Revival
608 South Sergeant	George Lavery House (<i>Gable detail, Hitching post</i>)	ca. 1899 ~ Queen Anne
611 South Sergeant	Elisha Mathews/George N. Spiva House (<i>Art Glass</i>)	ca. 1902 ~ Colonial Revival
616 South Sergeant	Arthur Waite House (<i>Pilaster, Art glass</i>)	ca. 1906 ~ American Foursquare: Classical elements
622 South Sergeant	Cadi Klein House (<i>Pediment, Doric columns</i>)	ca. 1900 ~ Queen Anne

MOFFET AVENUE

102 South Moffet	Charles Moore/Sig Klein House (<i>Palladian window, Art Glass</i>)	ca. 1900 ~ Classical Revival
106 South Moffet	Thomas Connor Nolan House (<i>Ionic columns, Hitching post</i>)	ca. 1902 ~ Free Classic Queen Anne
115 South Moffet	A.B. McConnell/Sol Newman House (<i>Dentils, Art glass</i>)	ca. 1899 ~ Free Classic Queen Anne
118 South Moffet	Benedict Landauer House (<i>Oriel window, Art glass</i>)	ca. 1902 ~ Queen Anne
130 South Moffet	Albert Newman House (<i>Modillions, Bay windows, Oculus, Art glass</i>)	ca. 1905 ~ Dutch Colonial Revival
212 South Moffet*	Frank Sharp House (<i>Mission parapet, Art glass</i>)	ca. 1909 ~ Mission Revival
220 South Moffet	Henry McNeal House (<i>Oriel window, Art glass, Carriage step</i>)	ca. 1908 ~ Prairie Style
310 South Moffet	Jesse Starr House (<i>Modillions, Art glass</i>)	ca. 1901 ~ Craftsman
320 South Moffet*	Olivia Apartments - Anton Bendelari (<i>Interior: Pompeian Style Doric columns</i>)	ca. 1906 ~ Classical Revival

BYERS AVENUE

402-404 South Byers	Ridgway Apartments (<i>Parapet pediment</i>)	ca. 1918 ~ Colonial Revival
420 South Byers*	Simon Schwartz House (<i>Bay windows, Brackets, Stone balustrade</i>)	ca. 1890 ~ Queen Anne
504 South Byers	John Wise House (<i>Art glass, Brackets, Spindle work, Bay windows, Pediment, Fish scale, Hitching post</i>)	ca. 1898 ~ Queen Anne
505 South Byers*	Valley of Joplin Scottish Rite Cathedral (<i>Bronze double doors, Windows with "Union Jack" lights, Art glass, Keystone and spandrels with floral motif panels.</i>)	ca. 1923 ~ Beaux-Arts style

FOURTH STREET

623 West Fourth*	A.H. Rogers House (<i>Broken pediment, Art glass</i>)	ca. 1899 ~ Colonial Revival
------------------	---	-----------------------------

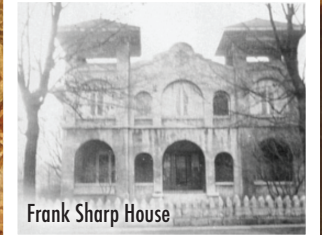
FIFTH STREET

524 West Fifth	William B. McAntire House (<i>Palladian window, Pediment, Bay window</i>)	ca. 1905 ~ Queen Anne
----------------	---	-----------------------

SECOND STREET

505 West Second	Morgan's Grocery Store (<i>Concrete Block Commercial Building</i>)	ca. 1934 ~ Depression era
619 West Second	A.L. James House (<i>Art glass</i>)	ca. 1899 ~ Victorian

*Vintage photograph shown

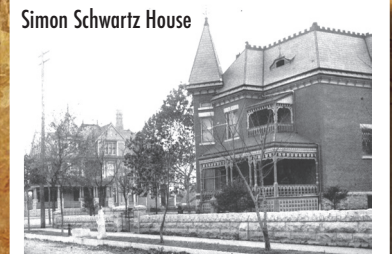


Frank Sharp House



Olivia Apartments

Simon Schwartz House



Scottish Rite Cathedral



A. H. Rogers House

